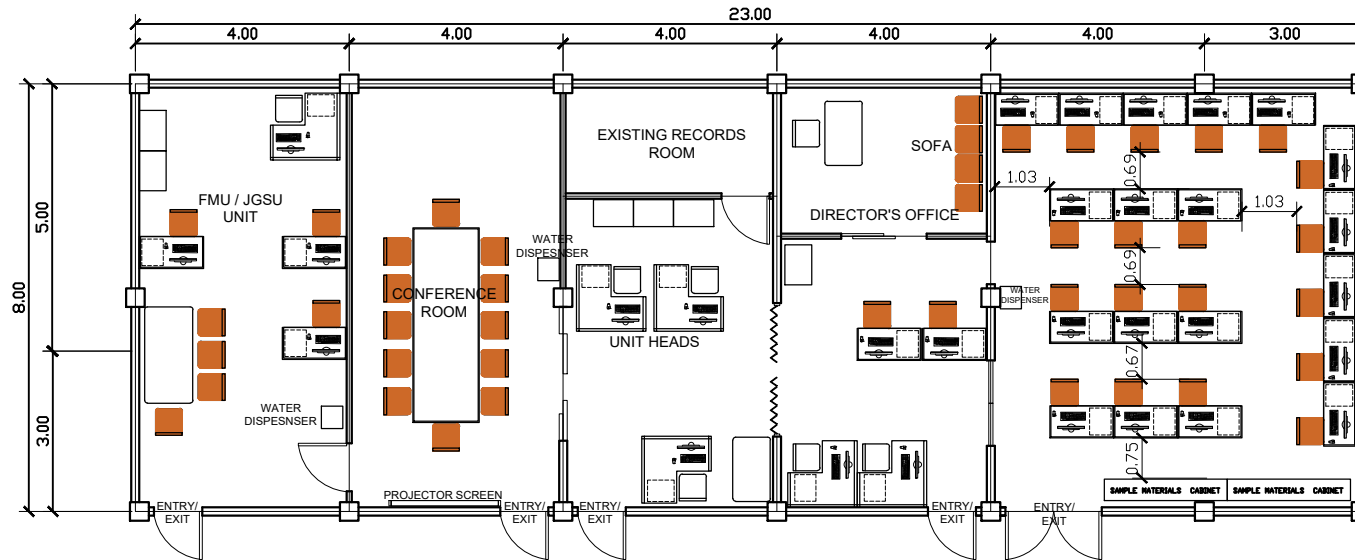


OFFICE OF FACILITIES DEVELOPMENT AND MANAGEMENT

120CM X 60CM (24 CUBICLES)
 120CMX120X60CM (6 CUBICLES)
 (DIMENSIONS ARE IN METERS)



PROPOSED CUBICLE LAYOUT

SCALE

1:100 M

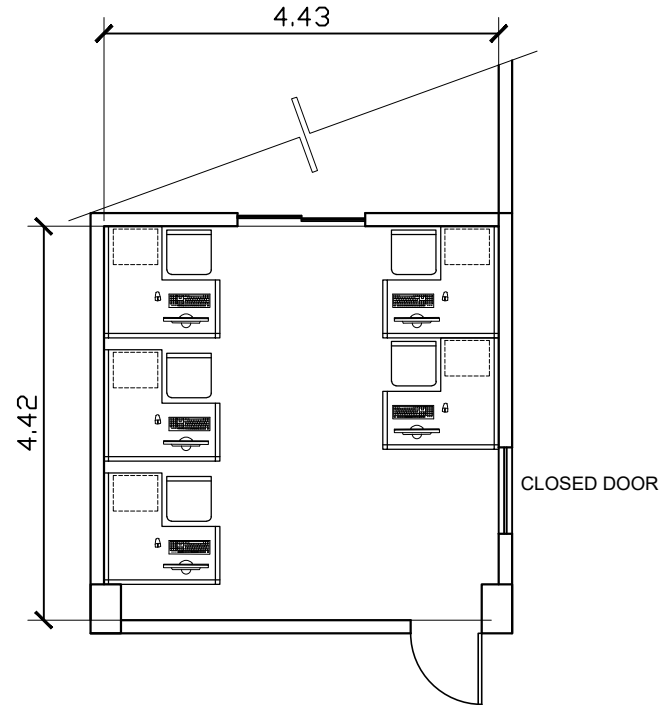
L-TYPE CUBICLE:
LEFT - 3 CUBICLES
RIGHT - 3 CUBICLES



PROJECT TITLE: LAYOUT OF OFFICE WORKSTATION/CUBICLE	PREPARED BY:	CHECKED BY:	RECOMMENDING APPROVAL:	REQUESTING OFFICE:	SHEET CONTENTS:	SHEET NO.:
	PROJECT LOCATION: TARLAC STATE UNIVERSITY	AR. PAULINE ANGELA M. MARTINEZ <small>DRAFTSMAN, FDMO</small>	AR. ARLEN M. GUIEB <small>PLANNING UNIT HEAD, FDMO</small>	AR. ARLEN M. GUIEB <small>OIC, FDMO</small>	MS. ELENA MAY T. TEOFILO <small>HEAD, PROCUREMENT UNIT</small>	AS SHOWN
					DATE: FEBRUARY 2024	1/1

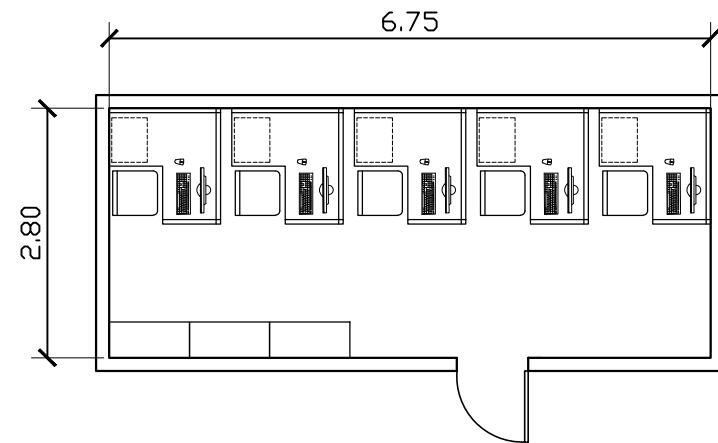
CPAG DEAN'S OFFICE

120CM X120CM X 60CM (5 CUBICLES)
(DIMENSIONS ARE IN METERS)



FACULTY EXTENSION OFFICE

120CM X120CM X 60CM (5 CUBICLES)
(DIMENSIONS ARE IN METERS)



LEFT - 7 CUBICLES
RIGHT - 3 CUBICLES

PROPOSED CUBICLE LAYOUT

SCALE

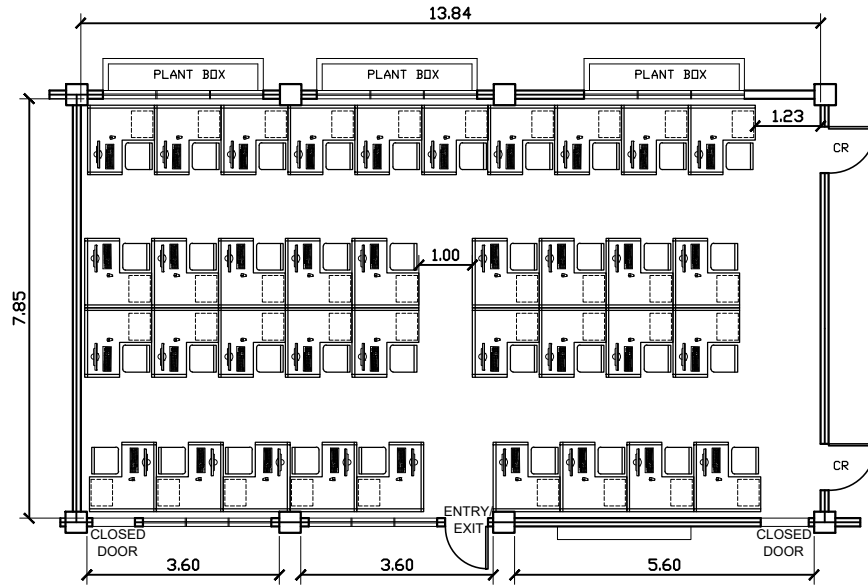
1:60 M



PROJECT TITLE: LAYOUT OF OFFICE WORKSTATION/CUBICLE	PREPARED BY: AR. PAULINE ANGELA M. MARTINEZ <small>DRAFTSMAN, FDMO</small>	CHECKED BY: AR. ARLEN M. GUIEB <small>PLANNING UNIT HEAD, FDMO</small>	RECOMMENDING APPROVAL: AR. ARLEN M. GUIEB <small>OIC, FDMO</small>	REQUESTING OFFICE: MS. ELENA MAY T. TEOFILO <small>HEAD, PROCUREMENT UNIT</small>	SHEET CONTENTS: AS SHOWN	SHEET NO.: A-1
PROJECT LOCATION: TARLAC STATE UNIVERSITY					DATE: FEBRUARY 2024	PAGE NO.: 1/1

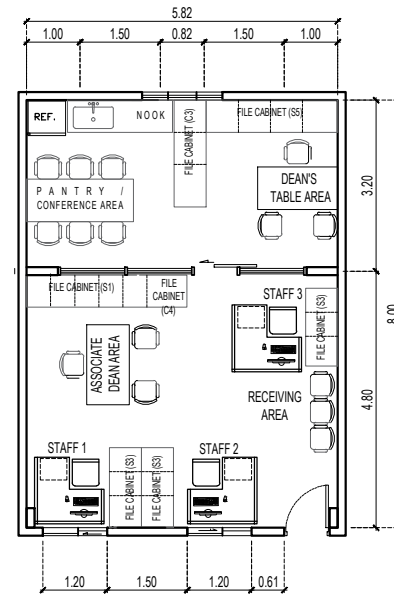
CBA

**FACULTY ROOM 120CM X120CM X 60CM (37 CUBICLES)
(DIMENSIONS ARE IN METERS)**



CBA

**DEAN'S OFFICE 120CM X120CM X 60CM (3 CUBICLES)
(DIMENSIONS ARE IN METERS)**



PROPOSED CUBICLE LAYOUT

SCALE

1:100 M

**LEFT - 14 CUBICLES
RIGHT - 26 CUBICLES**

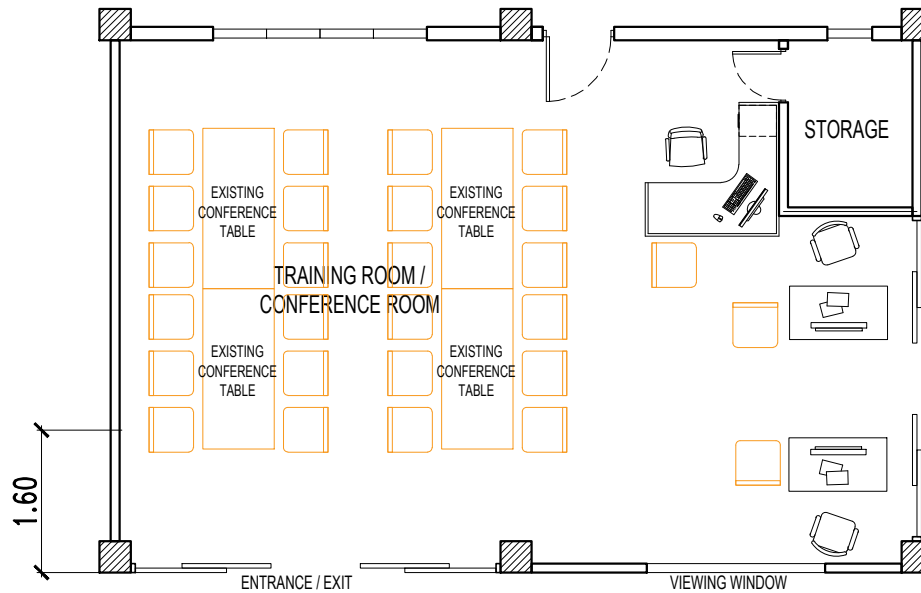


<p>TARLAC STATE UNIVERSITY Facilities Development and Management Office Rampala Bakhoven 4, Tarlac City, Philippines 2300</p>	PROJECT TITLE:	PREPARED BY:	CHECKED BY:	RECOMMENDING APPROVAL:	REQUESTING OFFICE:	SHEET CONTENTS:	SHEET NO.:
	LAYOUT OF OFFICE WORKSTATION/CUBICLE	AR. PAULINE ANGELA M. MARTINEZ DRAFTSMAN, FDMO	AR. ARLEN M. GUIEB PLANNING UNIT HEAD, FDMO	AR. ARLEN M. GUIEB OIC, FDMO	MS. ELENA MAY T. TEOFILO HEAD, PROCUREMENT UNIT	AS SHOWN	A-1
	PROJECT LOCATION:					TARLAC STATE UNIVERSITY	DATE: FEBRUARY 2024

CENTER FOR NATURAL PRODUCTS RESEARCH

GROUND FLOOR - RED BUILDING

(1 CUBICLE)



LEFT : 1
RIGHT : NONE

PROPOSED CUBICLE LAYOUT

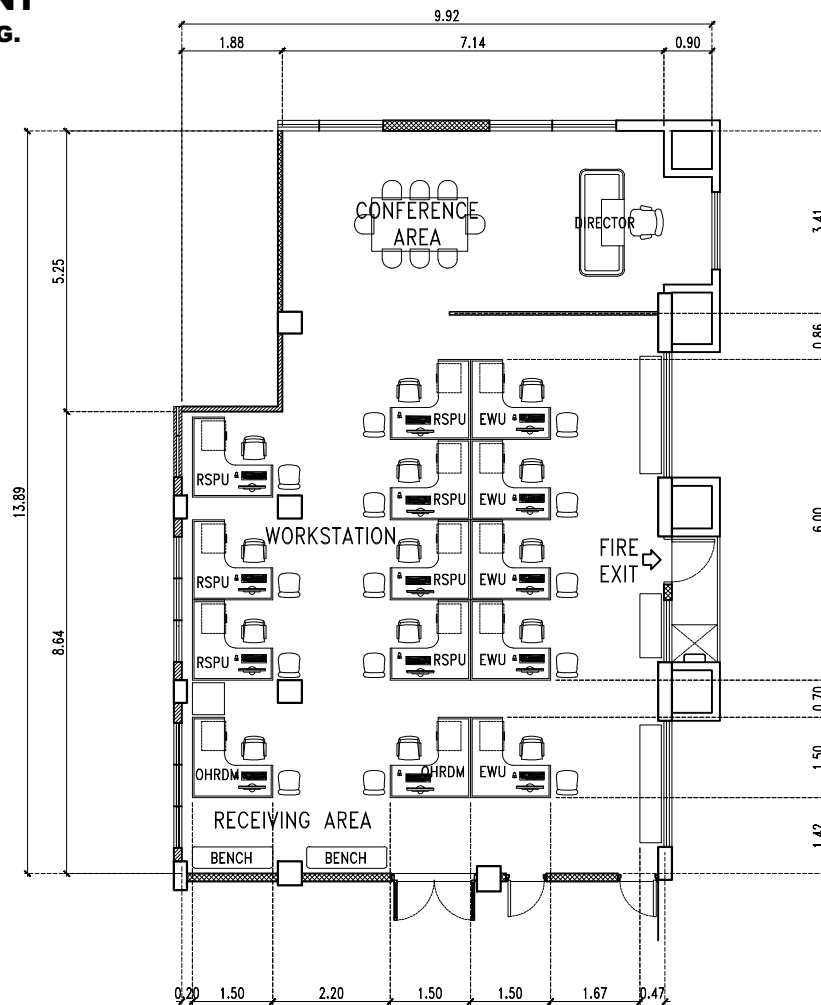
SCALE 1:60 MTS.



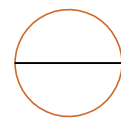
PROJECT TITLE: LAYOUT OF OFFICE WORKSTATION/CUBICLE PROJECT LOCATION: TARLAC STATE UNIVERSITY	PREPARED BY: AR. PAULINE ANGELA M. MARTINEZ <small>DRAFTSMAN, FDMO</small>	CHECKED BY: AR. ARLEN M. GUIEB <small>PLANNING UNIT HEAD, FDMO</small>	RECOMMENDING APPROVAL: AR. ARLEN M. GUIEB <small>OIC, FDMO</small>	REQUESTING OFFICE: MS. ELENA MAY T. TEOFILO <small>PROCUREMENT OFFICE</small>	SHEET CONTENTS: AS SHOWN DATE: OCTOBER 2023	SHEET NO.: A-1 PAGE NO.: 1/1

**OFFICE OF HUMAN RESOURCE
DEVELOPMENT AND MANAGEMENT
MEZZANINE FLOOR - ADMINISTRATION BLDG.**



**OHRDM - 2 CUBICLES
RSPU - 7 CUBICLES
EWU - 5 CUBICLES**



**LEFT - 5 CUBICLES
RIGHT - 9 CUBICLES**

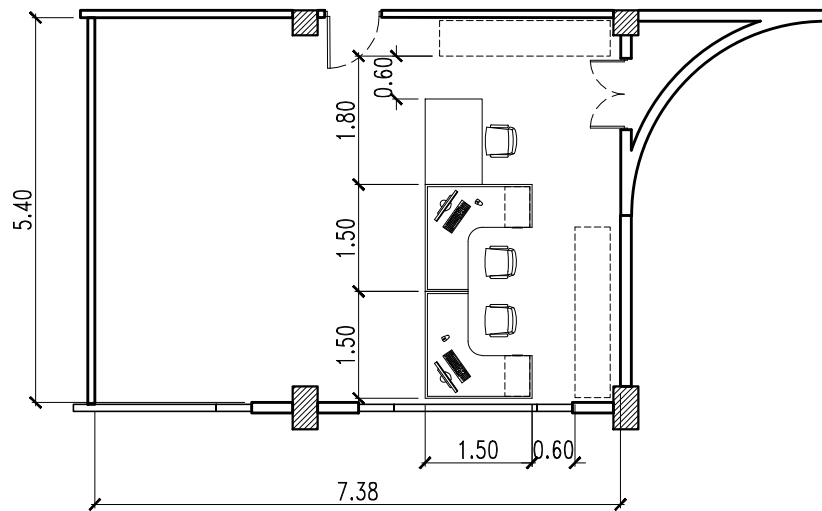


PROPOSED FLOOR PLAN
SCALE 1:100 METERS

  <p>TARLAC STATE UNIVERSITY Facilities Development and Management Office Rampala Bockwood, Tarlac City, Philippines 2300</p>	PROJECT TITLE:	PREPARED BY:	CHECKED BY:	RECOMMENDING APPROVAL:	REQUESTING OFFICE:	SHEET CONTENTS:	SHEET NO.:
	LAYOUT OF OFFICE WORKSTATION/CUBICLE	AR. PAULA ERIKA S. BOCOBO DRAFTSMAN, OFDM	AR. ARLEN M. GUIEB PLANNING UNIT HEAD, OFDM	AR. ARLEN M. GUIEB OIC, OFDM	ELENA MAY TEOFILO HEAD, PROCUREMENT OFFICE	AS SHOWN	A-1
	PROJECT LOCATION:					TARLAC STATE UNIVERSITY	DATE: FEBRUARY 2024

CENTER FOR PEACE, INDIGENOUS PEOPLE RESOURCES AND DEVELOPMENT

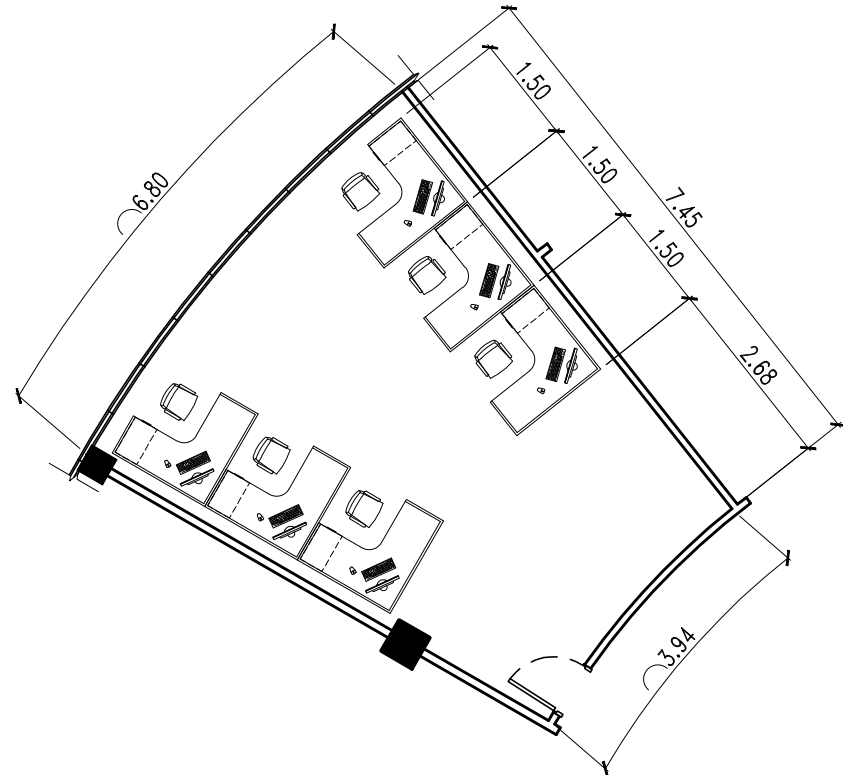
2ND FLOOR
(2 CUBICLES)



LEFT : 1
RIGHT : 1

OFFICE OF STUDENT AFFAIRS

2ND FLOOR
(6 CUBICLES)



LEFT : 3
RIGHT : 3

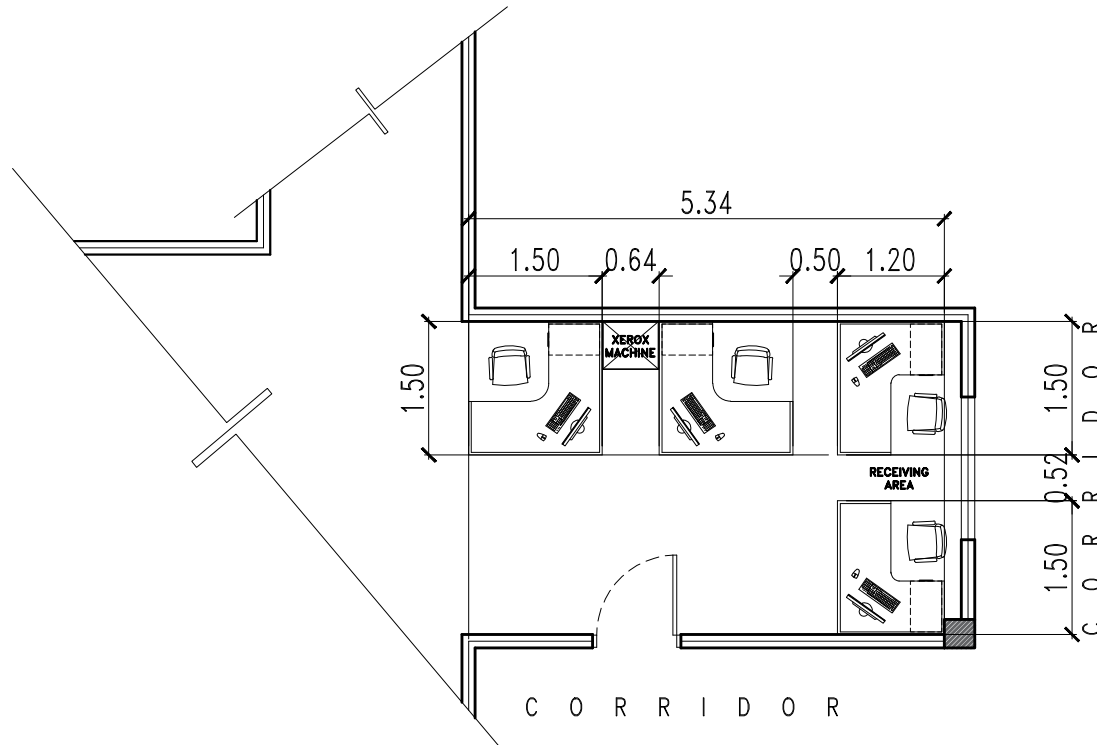
PROPOSED CUBICLE LAYOUT

SCALE 1:75 MTS.



PROJECT TITLE: LAYOUT OF OFFICE WORKSTATION/CUBICLE PROJECT LOCATION: TARLAC STATE UNIVERSITY	PREPARED BY: AR. PAULA ERIKA S. BOCOBO DRAFTSMAN, FDMO	CHECKED BY: AR. ARLEN M. GUIEB PLANNING UNIT HEAD, FDMO	RECOMMENDING APPROVAL: AR. ARLEN M. GUIEB OIC, FDMO	REQUESTING OFFICE: MS. ELENA MAY T. TEOFILO PROCUREMENT OFFICE	SHEET CONTENTS: AS SHOWN	SHEET NO.: A-1
					DATE: OCTOBER 2023	PAGE NO.: 1/1

**OFFICE OF THE VICE PRESIDENT FOR
ADMINISTRATION AND AND FINANCE
2ND FLOOR ADMINISTRATION BUILDING
(4 CUBICLES)**



2 SETS = 1.5m x 1.5m
x 0.60m CUBICLE
LEFT : 1
RIGHT : 1

2 SETS = 1.5m x 1.2m
x 0.60m CUBICLE
LEFT : 1
RIGHT : 1

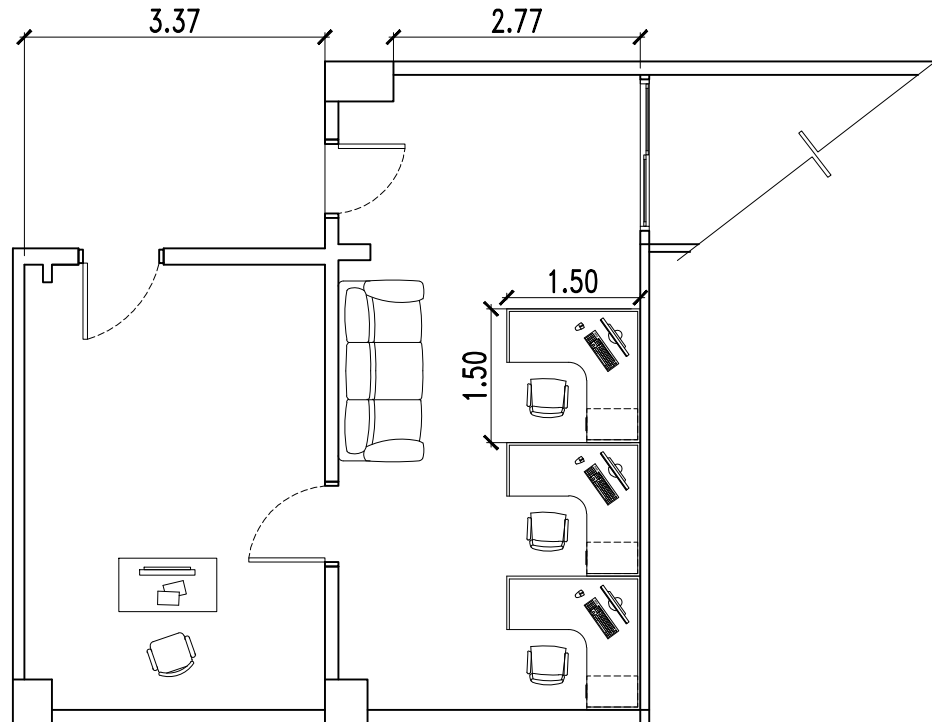
PROPOSED CUBICLE LAYOUT

SCALE 1:60 MTS.



PROJECT TITLE: LAYOUT OF OFFICE WORKSTATION/CUBICLE	PREPARED BY: AR. PAULINE ANGELA M. MARTINEZ DRAFTSMAN, FDMO	CHECKED BY: AR. ARLEN M. GUIEB PLANNING UNIT HEAD, FDMO	RECOMMENDING APPROVAL: AR. ARLEN M. GUIEB OIC, FDMO	REQUESTING OFFICE: MS. ELENA MAY T. TEOFILO PROCUREMENT OFFICE	SHEET CONTENTS: AS SHOWN	SHEET NO.: A-1
PROJECT LOCATION: TARLAC STATE UNIVERSITY					DATE: OCTOBER 2023	PAGE NO.: 1/1

**OFFICE OF THE COMMISSIONER ON
AUDIT
MEZZANINE FLOOR ADMINISTRATION BUILDING
(3 CUBICLES)**



LEFT : NONE
RIGHT : 3

PROPOSED CUBICLE LAYOUT

SCALE 1:60 MTS.



TARLAC STATE UNIVERSITY
Facilities Development and
Management Office
Remulo S. Encarnado, Tarlac City, Philippines 2300

LAYOUT OF OFFICE WORKSTATION/CUBICLE	PREPARED BY:	CHECKED BY:	RECOMMENDING APPROVAL:	REQUESTING OFFICE:	SHEET CONTENTS:	SHEET NO:
	TARLAC STATE UNIVERSITY	AR. PAULINE ANGELA M. MARTINEZ DRAFTSMAN, FDMO	AR. ARLEN M. GUIEB PLANNING UNIT HEAD, FDMO	AR. ARLEN M. GUIEB OIC, FDMO	MS. ELENA MAY T. TEOFILO PROCUREMENT OFFICE	AS SHOWN A-1
					DATE: OCTOBER 2023	PAGE NO: 1/1

STUDENT WELFARE SERVICES UNIT OFFICE

150CM X150CM X 60CM (7 CUBICLES)
 (DIMENSIONS ARE IN METERS)



LEFT - 4 CUBICLES
RIGHT - 3 CUBICLES

PROPOSED CUBICLE LAYOUT

SCALE

1:100 M



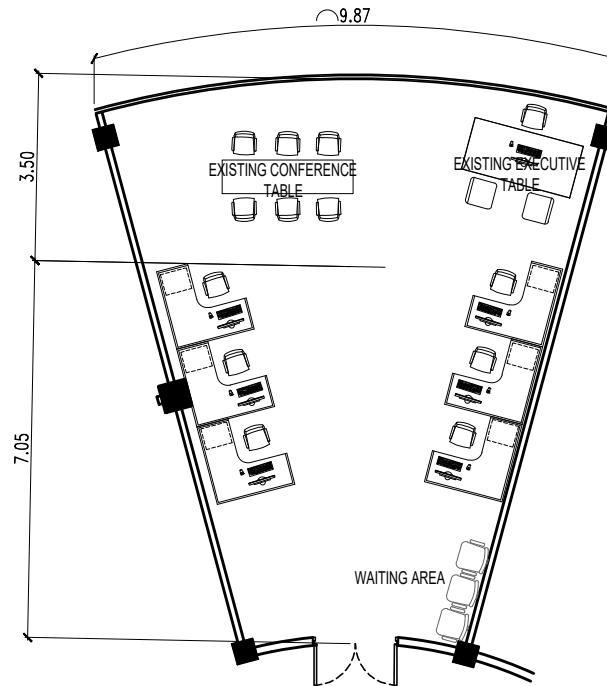
TARLAC STATE UNIVERSITY
 Facilities Development and
 Management Office
 Romulo Road, Tarlac City, Philippines 2300

PROJECT TITLE: LAYOUT OF OFFICE WORKSTATION/CUBICLE	PREPARED BY: AR. PAULINE ANGELA M. MARTINEZ DRAFTSMAN, FDMO	CHECKED BY: AR. ARLEN M. GUIEB PLANNING UNIT HEAD, FDMO	RECOMMENDING APPROVAL: AR. ARLEN M. GUIEB OIC, FDMO	REQUESTING OFFICE: MS. ELENA MAY T. TEOFILO HEAD, PROCUREMENT UNIT	SHEET CONTENTS: AS SHOWN	SHEET NO.: A-1
PROJECT LOCATION: TARLAC STATE UNIVERSITY					DATE: FEBRUARY 2024	PAGE NO.: 1/1

OFFICE OF STUDENT AFFAIRS SERVICES

TESTING OFFICE 150CMX150X60CM (6 CUBICLES)

(DIMENSIONS ARE IN METERS)

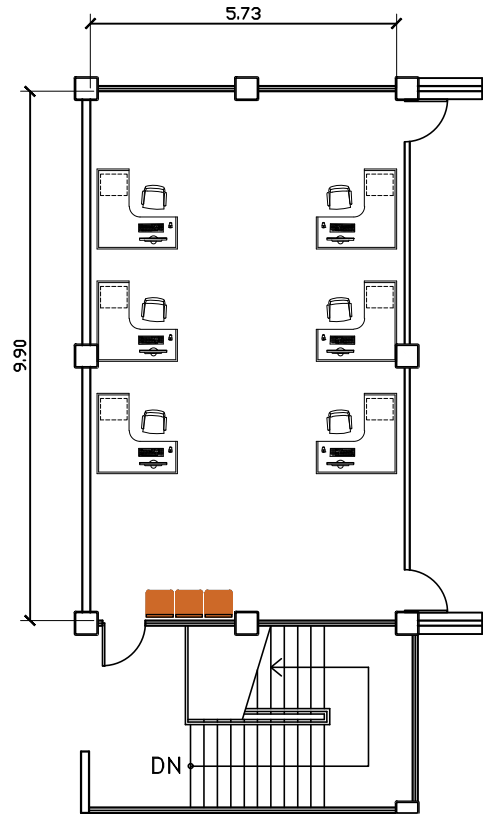


**LEFT - 3 CUBICLES
RIGHT - 3 CUBICLES**



 TARLAC STATE UNIVERSITY Facilities Development and Management Office Ramula Balcovina 4, Tarlac City, Philippines 2300	PROJECT TITLE:	PREPARED BY:	CHECKED BY:	RECOMMENDING APPROVAL:	REQUESTING OFFICE:	SHEET CONTENTS:	SHEET NO.:
	LAYOUT OF OFFICE WORKSTATION/CUBICLE	AR. PAULINE ANGELA M. MARTINEZ DRAFTSMAN, FDMO	AR. ARLEN M. GUIEB PLANNING UNIT HEAD, FDMO	AR. ARLEN M. GUIEB OIC, FDMO	MS. ELENA MAY T. TEOFILO HEAD, PROCUREMENT UNIT	AS SHOWN	A-1
	PROJECT LOCATION:					TARLAC STATE UNIVERSITY	FEBRUARY 2024

QMS & ARTA UNIT
150CM X150CM X 60CM (6 CUBICLES)
(DIMENSIONS ARE IN METERS)



PROPOSED CUBICLE LAYOUT

SCALE

1:100 M

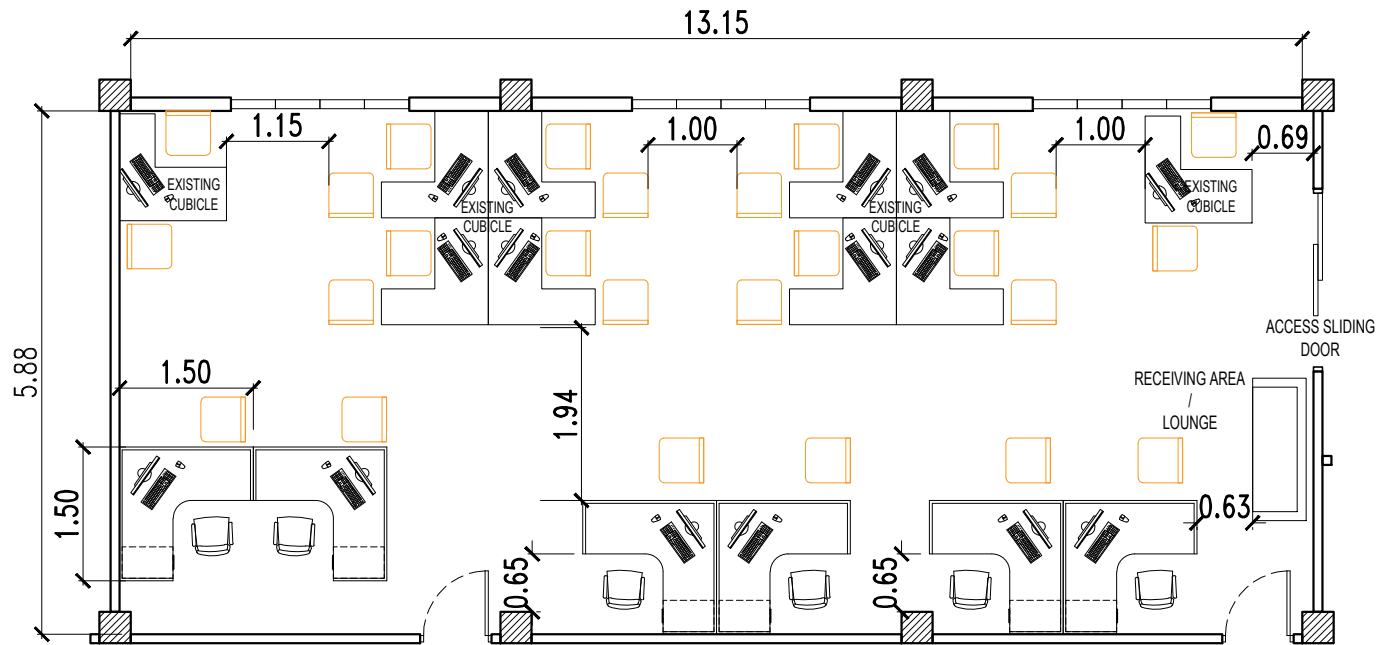
LEFT - 3 CUBICLES
RIGHT - 3 CUBICLES



PROJECT TITLE: LAYOUT OF OFFICE WORKSTATION/CUBICLE	PREPARED BY: AR. PAULINE ANGELA M. MARTINEZ <small>DRAFTSMAN, FDMO</small>	CHECKED BY: AR. ARLEN M. GUIEB <small>PLANNING UNIT HEAD, FDMO</small>	RECOMMENDING APPROVAL: AR. ARLEN M. GUIEB <small>OIC, FDMO</small>	REQUESTING OFFICE: MS. ELENA MAY T. TEOFILO <small>HEAD, PROCUREMENT UNIT</small>	SHEET CONTENTS: AS SHOWN	SHEET NO.: A-1
	PROJECT LOCATION: TARLAC STATE UNIVERSITY					PAGE NO.: 1/1
					DATE: FEBRUARY 2024	

UNIVERSITY RESEARCH OFFICE

2ND FLOOR - RED BUILDING
(6 CUBICLES)



LEFT : 3
RIGHT : 3

PROPOSED CUBICLE LAYOUT

SCALE 1:60 MTS.



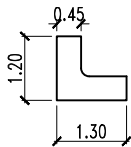
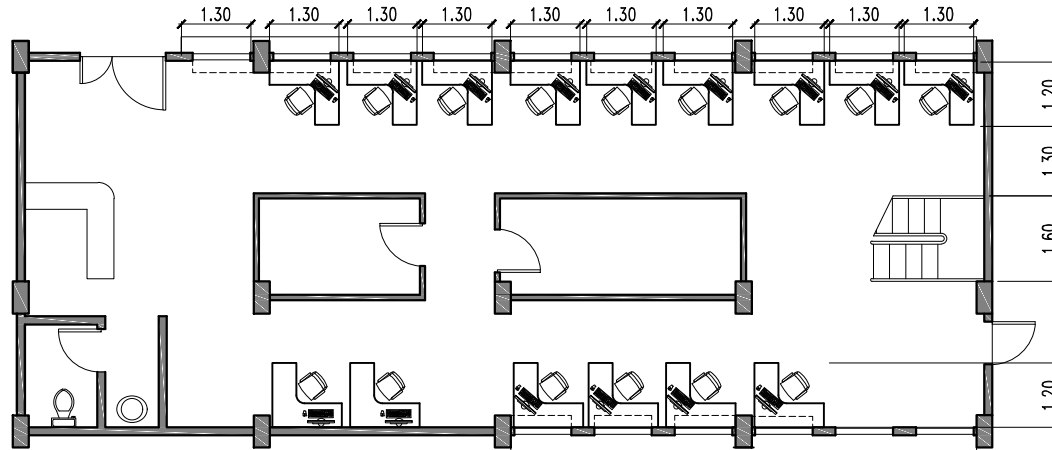
TARLAC STATE UNIVERSITY
Facilities Development and
Management Office
Rampala Bachelors 4, Tarlac City, Philippines 2300

PROJECT TITLE: LAYOUT OF OFFICE WORKSTATION/CUBICLE	PREPARED BY: AR. PAULINE ANGELA M. MARTINEZ DRAFTSMAN, FDMO	CHECKED BY: AR. ARLEN M. GUIEB PLANNING UNIT HEAD, FDMO	CERTIFIED BY: AR. ARLEN M. GUIEB OIC, FDMO	REQUESTING OFFICE: MS. ELENA MAY T. TEOFILO PROCUREMENT OFFICE	SHEET CONTENTS: AS SHOWN	SHEET NO.: A-1
PROJECT LOCATION: TARLAC STATE UNIVERSITY					DATE: OCTOBER 2023	PAGE NO.: 1/1

OFFICE OF REGISTRATION AND ADMISSION

GROUND FLOOR

(15 CUBICLES)



CUBICLE SIZE: 1.30m X 1.20m X 0.45m
 TABLE HEIGHT: 0.73m
 RIGHT :15
 LEFT: 0

NOTE: L-SHAPE TABLE W/ GROMMET
 SIZE: 1.30m X 1.20m X 0.45m
 PANEL SIZE: H120 X W120cm = 1pc.
 TOTAL= 13 CUBICLES

NOTE: L-SHAPE TABLE W/ GROMMET
 SIZE: 1.30m X 1.20m X 0.45m
 PANEL SIZE:
 H120 X W120cm = 1pc.
 H120 X W130cm = 1pc.
 H120 x W45cm = 1pc.
 TOTAL = 2 CUBICLES

PROPOSED CUBICLE LAYOUT

SCALE 1:100 MTS.

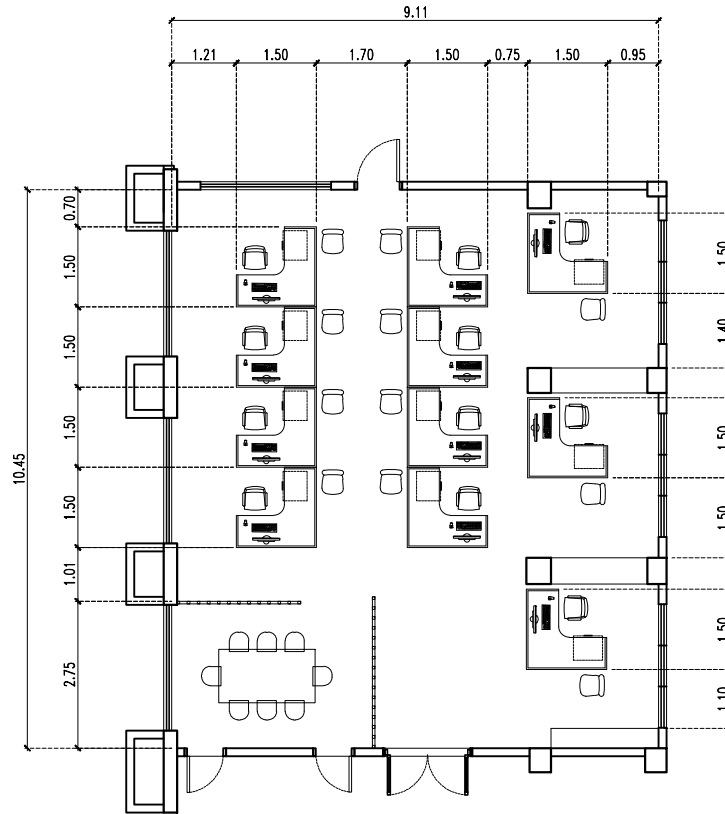


PROJECT TITLE: LAYOUT OF OFFICE WORKSTATION/CUBICLE	PREPARED BY: AR. PAULINE ANGELA M. MARTINEZ DRAFTSMAN, OFDM	CHECKED BY: AR. ARLEN M. GUIEB PLANNING UNIT HEAD, FDMO	REQUESTING OFFICE: MS. ELENA MAY T. TEOFILO HEAD, PROCUREMENT UNIT	SHEET CONTENTS: AS SHOWN	SHEET NO.: A-1
PROJECT LOCATION: TARLAC STATE UNIVERSITY				DATE:	PAGE NO.: 1/1

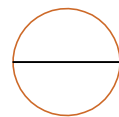
OFFICE OF FINANCE

MEZZANINE FLOOR - ADMINISTRATION BLDG.

ACCOUNTING UNIT - 11 CUBICLES



LEFT - 7 CUBICLES
RIGHT - 4 CUBICLES



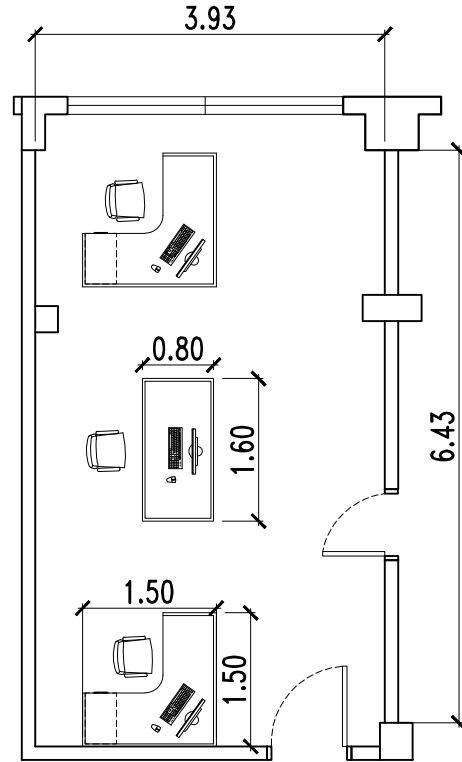
PROPOSED FLOOR PLAN
SCALE 1:100 METERS



TARLAC STATE UNIVERSITY
Facilities Development and
Management Office
Rampala Balcovina 4, Tarlac City, Philippines 2300

PROJECT TITLE: LAYOUT OF OFFICE WORKSTATION/CUBICLE	PREPARED BY: AR. PAULA ERIKA S. BOCOBO DRAFTSMAN, OFDM	CHECKED BY: AR. ARLEN M. GUIEB PLANNING UNIT HEAD, OFDM	RECOMMENDING APPROVAL: AR. ARLEN M. GUIEB OIC, OFDM	REQUESTING OFFICE: ELENA MAY TEOFILO HEAD, PROCUREMENT OFFICE	SHEET CONTENTS: AS SHOWN	SHEET NO.: A-1
PROJECT LOCATION: TARLAC STATE UNIVERSITY					DATE: FEBRUARY 2024	PAGE NO.: 1/1

ACCOUNTING OFFICE
GROUND FLOOR ADMINISTRATION BUILDING
(3 CUBICLES)



2 SETS = 1.5m x 1.5m
 x 0.60m CUBICLE
 LEFT : NONE
 RIGHT: 2

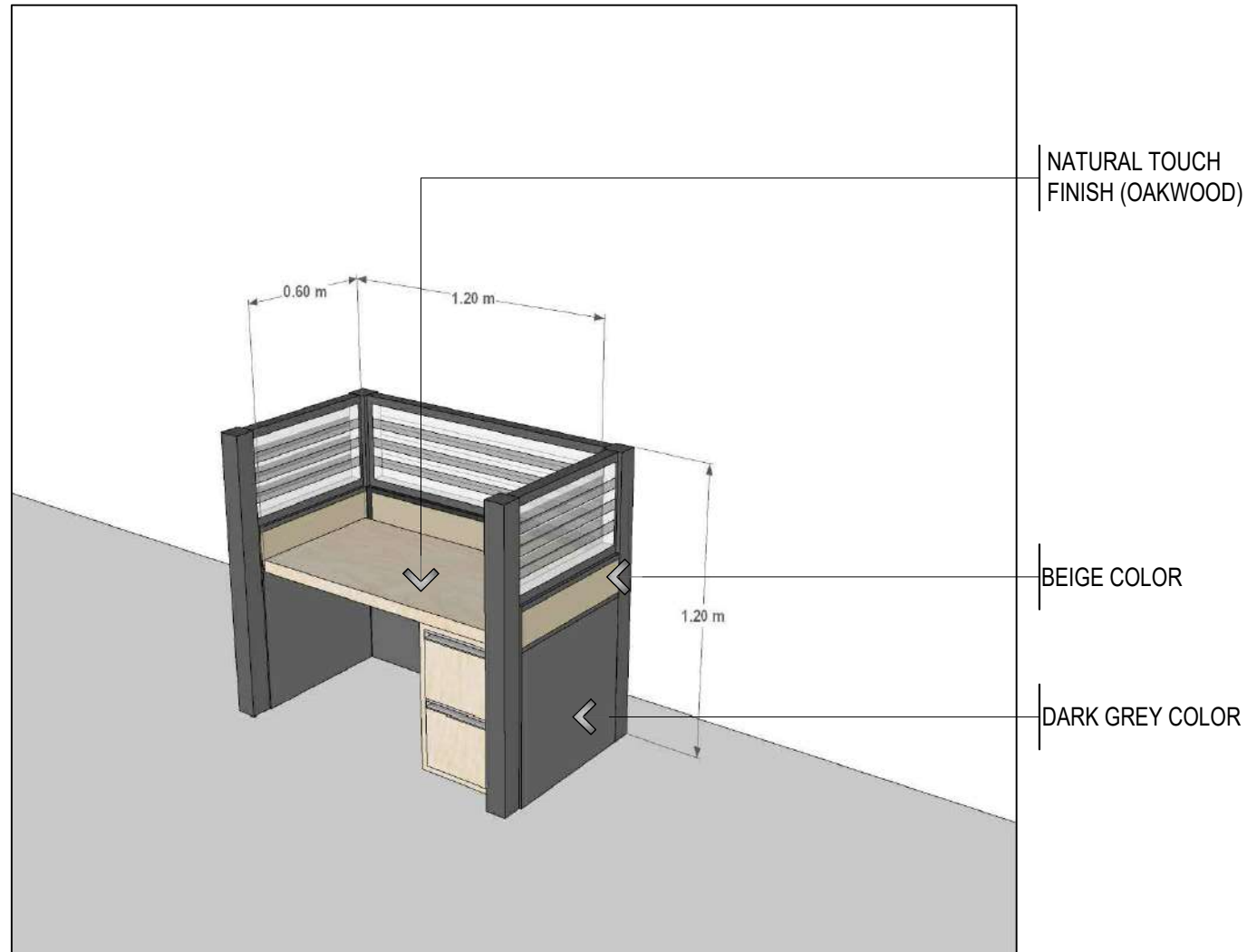
PROPOSED CUBICLE LAYOUT


SCALE 1:60 MTS.



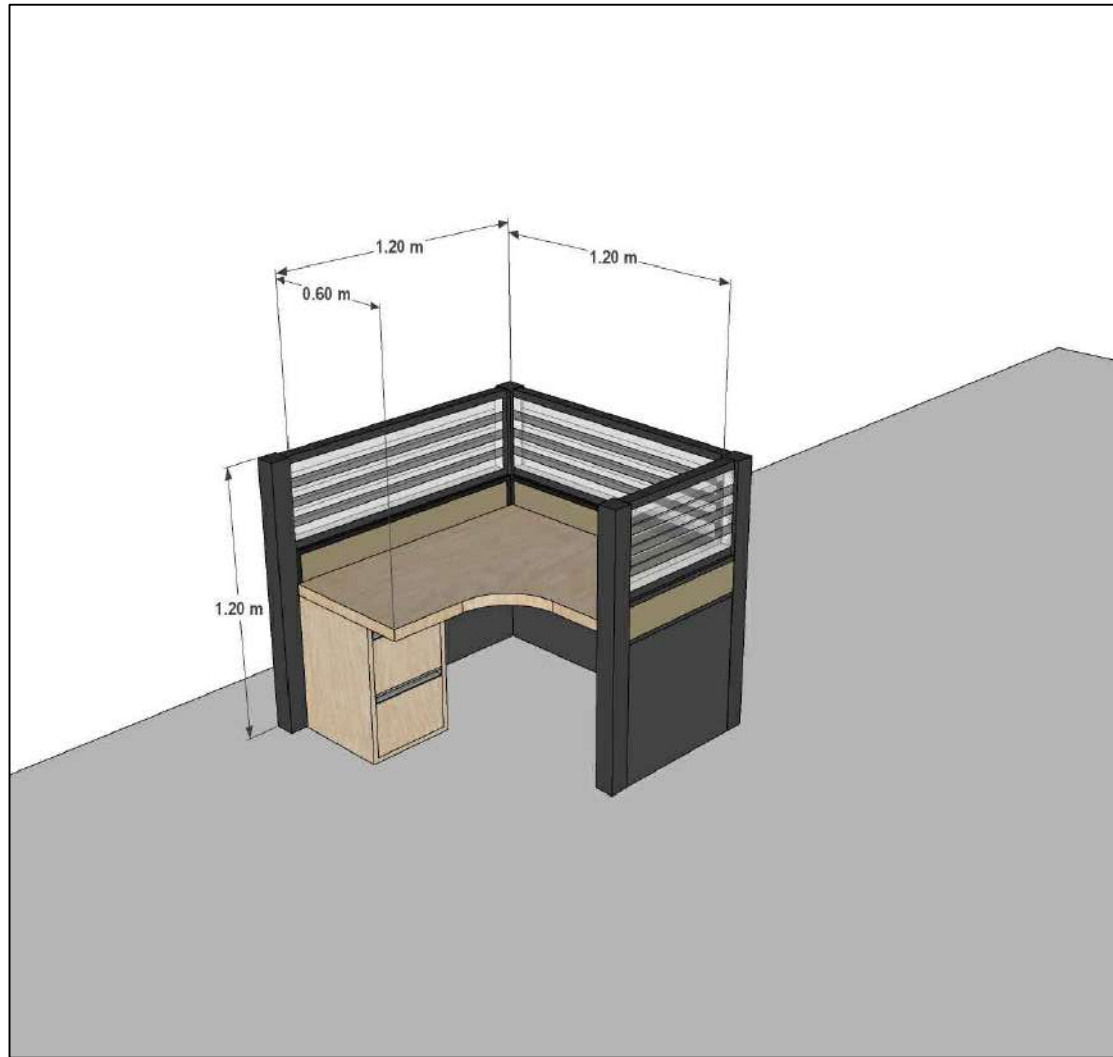
TARLAC STATE UNIVERSITY Facilities Development and Management Office Ramula Balcovad, Tarlac City, Philippines 2300	LAYOUT OF OFFICE WORKSTATION/CUBICLE	PREPARED BY:	CHECKED BY:	RECOMMENDING APPROVAL:	REQUESTING OFFICE:	SHEET CONTENTS:	SHEET NO:
	TARLAC STATE UNIVERSITY	AR. PAULINE ANGELA M. MARTINEZ DRAFTSMAN, FDMO	AR. ARLEN M. GUIEB PLANNING UNIT HEAD, FDMO	AR. ARLEN M. GUIEB OIC, FDMO	MS. ELENA MAY T. TEOFILO PROCUREMENT OFFICE	AS SHOWN	A-1
						DATE: OCTOBER 2023	PAGE NO: 1/1


ITEM NO. 1



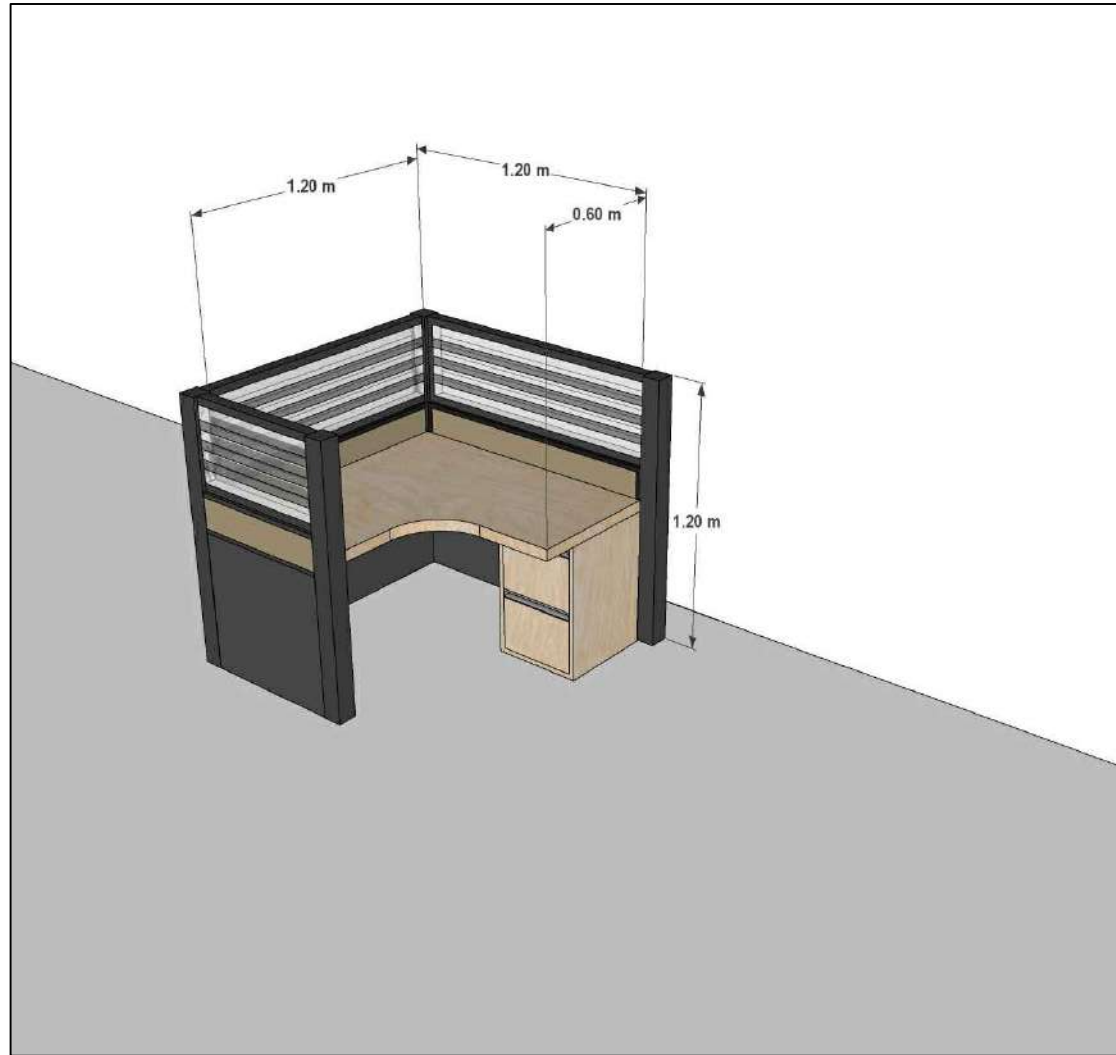
 TARLAC STATE UNIVERSITY Facilities Development and Management Office <small>Romulo Boulevard, Tarlac City, Philippines 2300</small>	PROJECT TITLE:	PREPARED BY:	CHECKED BY:	RECOMMENDING APPROVAL:	REQUESTING OFFICE:	SHEET CONTENTS:	SHEET NO.:
	3D VIEW OF CUBICLES						
	PROJECT LOCATION:						
						AS SHOWN	PAGE NO.:
						DATE:	


ITEM NO. 2 LEFT



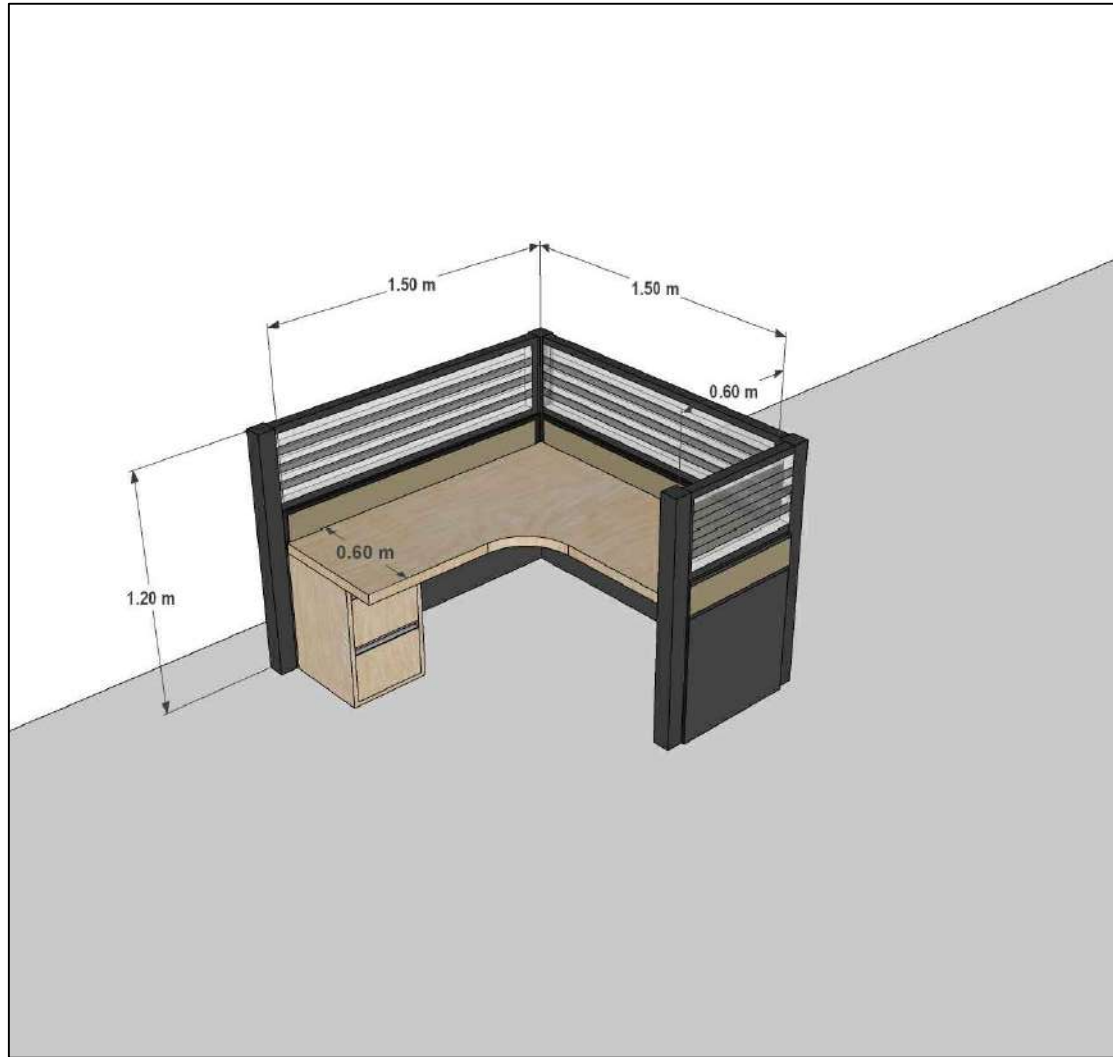
 TARLAC STATE UNIVERSITY Facilities Development and Management Office <small>Remulo Boulevard, Tarlac City, Philippines 2300</small>	PROJECT TITLE:	PREPARED BY:	CHECKED BY:	RECOMMENDING APPROVAL:	REQUESTING OFFICE:	SHEET CONTENTS:	SHEET NO.:
	PROJECT LOCATION:					AS SHOWN	PAGE NO.:
						DATE:	


ITEM NO. 2 RIGHT



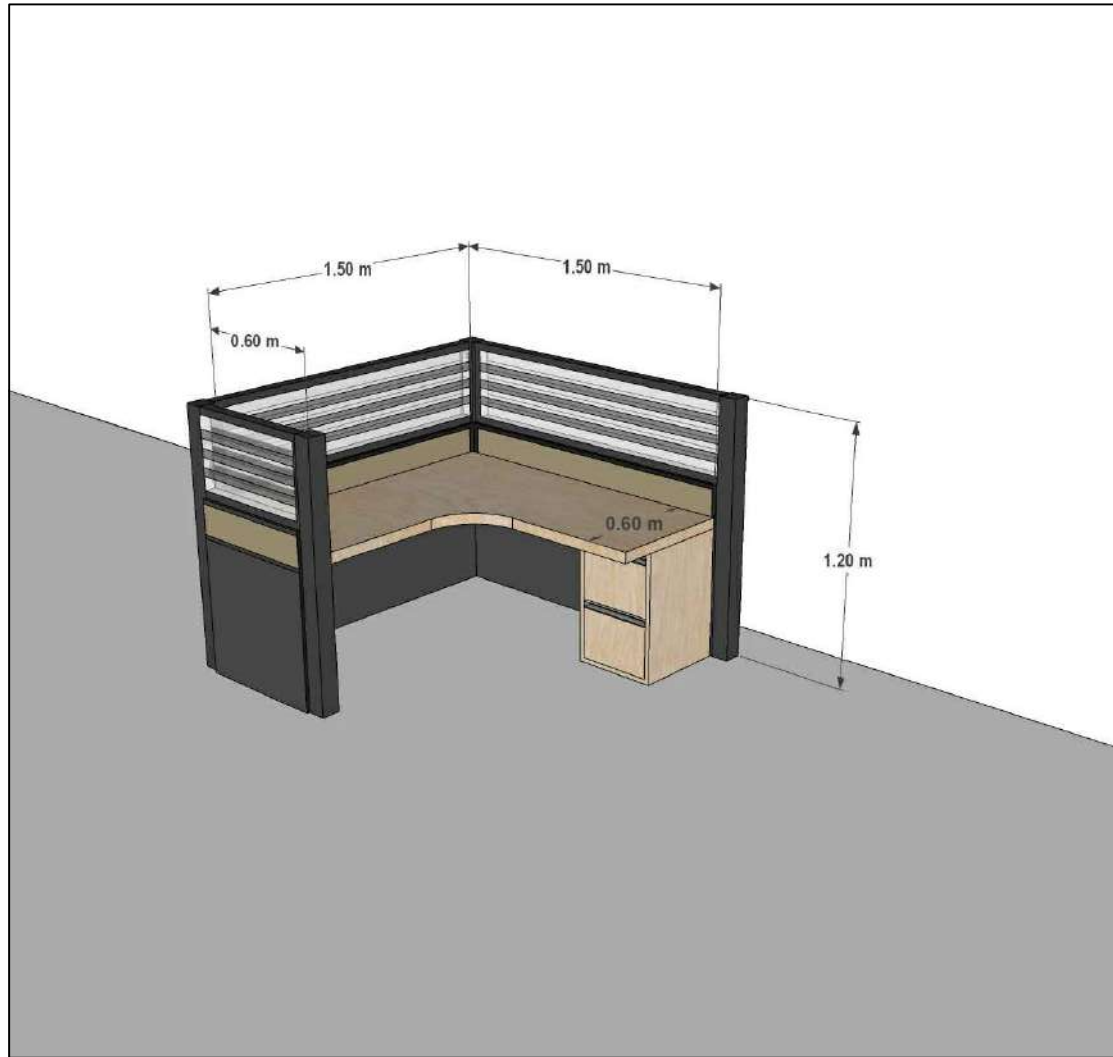
 TARLAC STATE UNIVERSITY Facilities Development and Management Office <small>Romulo Boulevard, Tarlac City, Philippines 2300</small>	PROJECT TITLE:	PREPARED BY:	CHECKED BY:	RECOMMENDING APPROVAL:	REQUESTING OFFICE:	SHEET CONTENTS:	SHEET NO.:
	PROJECT LOCATION:					AS SHOWN	PAGE NO.:
						DATE:	


ITEM NO. 3 LEFT



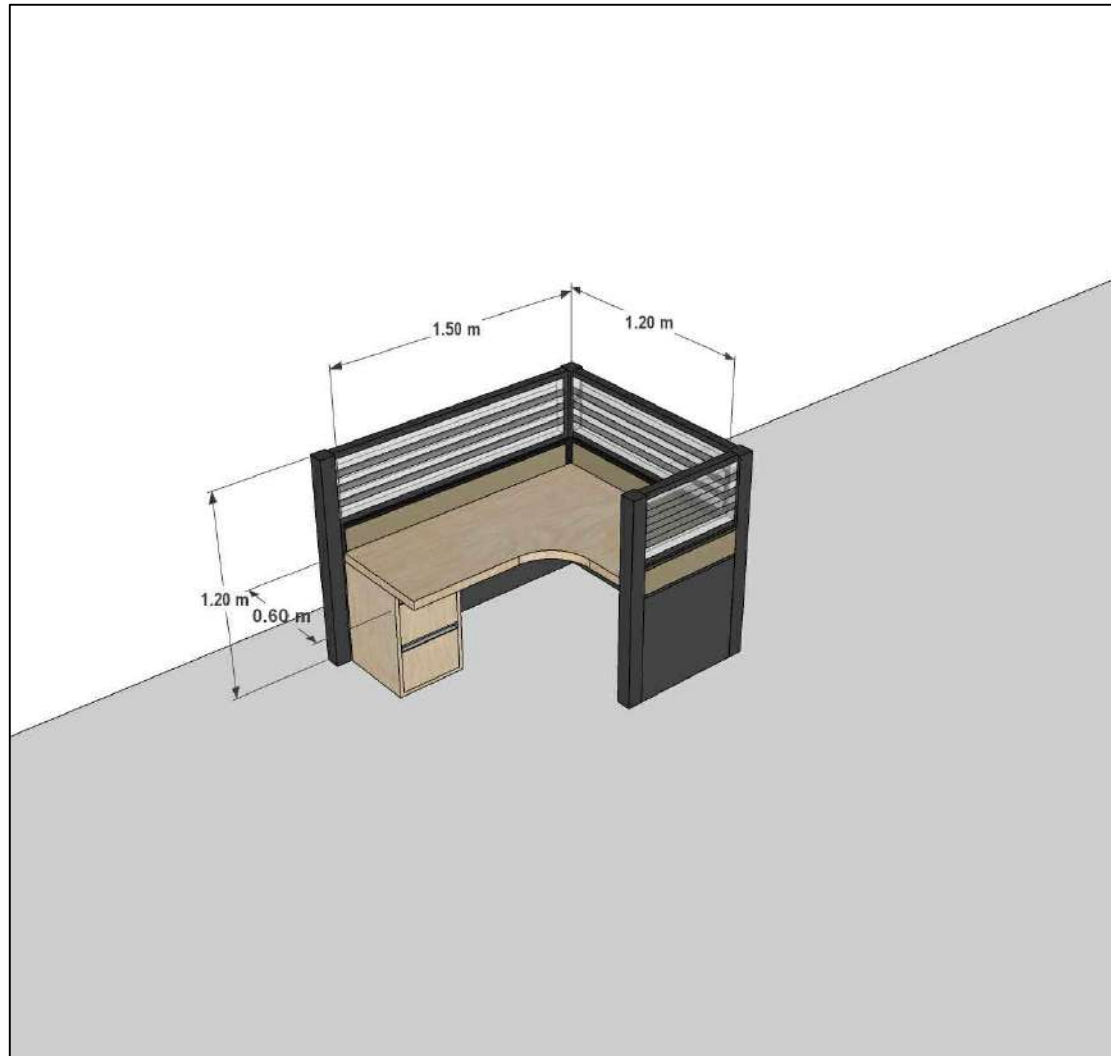
 TARLAC STATE UNIVERSITY Facilities Development and Management Office <small>Remulo Boulevard, Tarlac City, Philippines 2300</small>	PROJECT TITLE:	PREPARED BY:	CHECKED BY:	RECOMMENDING APPROVAL:	REQUESTING OFFICE:	SHEET CONTENTS:	SHEET NO.:
	PROJECT LOCATION:					AS SHOWN	PAGE NO.:
						DATE:	


ITEM NO. 3 RIGHT



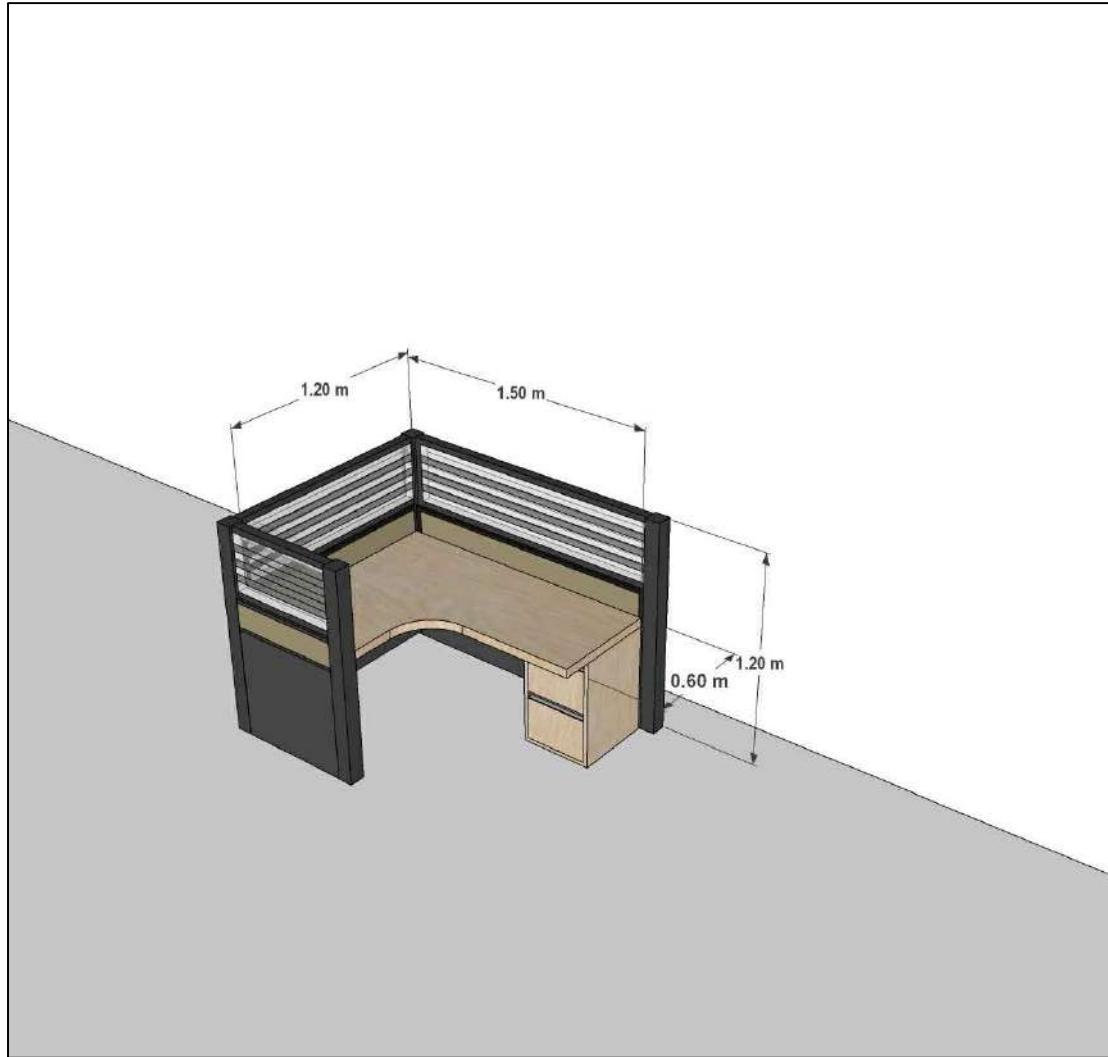
 TARLAC STATE UNIVERSITY Facilities Development and Management Office <small>Romulo Boulevard, Tarlac City, Philippines 2300</small>	PROJECT TITLE:	PREPARED BY:	CHECKED BY:	RECOMMENDING APPROVAL:	REQUESTING OFFICE:	SHEET CONTENTS:	SHEET NO.:
	PROJECT LOCATION:					AS SHOWN	PAGE NO.:
							DATE:



ITEM NO. 4 LEFT



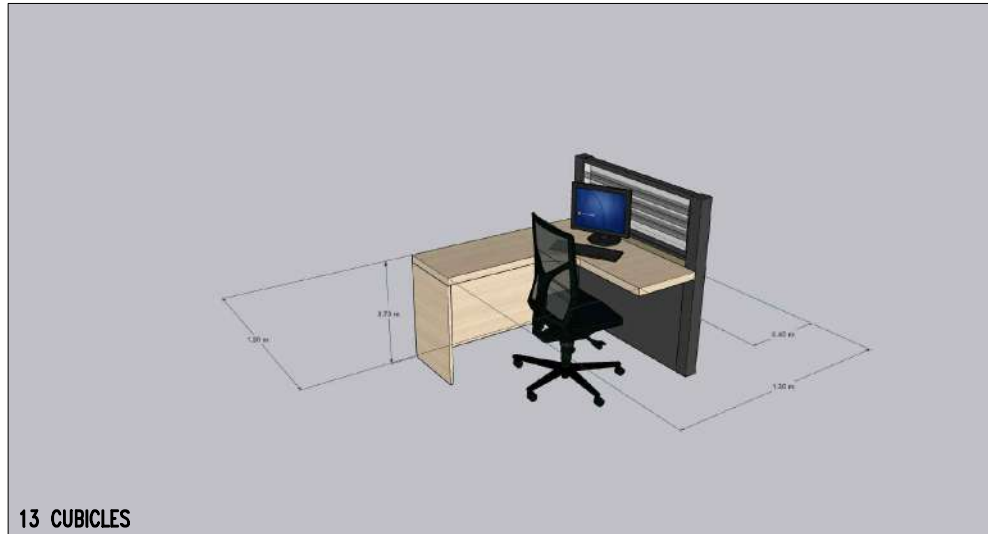
 TARLAC STATE UNIVERSITY Facilities Development and Management Office <small>Remulo Boulevard, Tarlac City, Philippines 2300</small>	PROJECT TITLE:	PREPARED BY:	CHECKED BY:	RECOMMENDING APPROVAL:	REQUESTING OFFICE:	SHEET CONTENTS:	SHEET NO.:
	PROJECT LOCATION:					AS SHOWN	PAGE NO.:
						DATE:	

ITEM NO. 4 RIGHT



  <p>TARLAC STATE UNIVERSITY Facilities Development and Management Office Remulo Boulevard, Tarlac City, Philippines 2300</p>	PROJECT TITLE:	PREPARED BY:	CHECKED BY:	RECOMMENDING APPROVAL:	REQUESTING OFFICE:	SHEET CONTENTS:	SHEET NO.:
	PROJECT LOCATION:					AS SHOWN	PAGE NO.:
						DATE:	

ITEM NO. 5



ITEM NO. 6



PROPOSED CUBICLE LAYOUT

NTS



PROJECT TITLE:	PREPARED BY:	CHECKED BY:	REQUESTING OFFICE:	SHEET CONTENTS:	SHEET NO.:
LAYOUT OF OFFICE WORKSTATION/CUBICLE	AR. PAULINE ANGELA M. MARTINEZ DRAFTSMAN, OFDM	AR. ARLEN M. GUIEB PLANNING UNIT HEAD, FDMO	MS. ELENA MAY T. TEOFILO HEAD, PROCUREMENT UNIT	AS SHOWN	A-1
PROJECT LOCATION:				DATE:	PAGE NO.:
TARLAC STATE UNIVERSITY					1/1